

Guide to **WILLOW**



June 2009

**Created by
HONEYBEE PUBLISHING**





PREFACE

This guide is intended to present both essential and interesting information to newcomers, long time residents or simply passersby who wish to know more about Willow. Limited copies have been made of the first June 2009 edition. It is our intention to update, improve and add information for a second edition next year.

The Guide to Willow is also available **on line free of charge**. Go to the Willow Chamber of Commerce website at <http://www.willowchamber.org> or WACO's (Willow Area Community Organization) website at <http://www.waco-ak.org>.

I would like to especially thank Shirley Wakeman, Claire Fitzgaird, Bill Luth, Jim Huston, Pat Madigan and Mike Bishop for their help in putting this information together.

Please contact Mary Lou Frahm at 495-3674 with any changes, updates or comments about this Guide. **Businesses** wishing to be listed in next years guide should call with their business information. There is no charge to be on the business list.

TABLE OF CONTENTS

Short history of the Willow area by Gayle A. Wood
Phone numbers of interest & Emergency numbers
Voting information
Churches
Local Organizations
Local activities
Farmers Market
Parks & Recreation: Information
MAPS: Nancy Lake winter trail, Nancy Lake summer trail, Emil-Stancec trail, Hassler-Norris trail
Willow Airport
Businesses
Willow Winter Carnival
Iditarod restart: Date, description, parking
Junior Iditarod
Annual Community Events
Local Weather statistics
Fishing – stocked lakes and salmon runs
West Gateway trail map

A HISTORY OF WILLOW, ALASKA

This section is from Gayle A Woods' paper of 1996, much of which was researched by Rosalie White "The Story of Willow" (1976) and the Willow Review (1977).

The Tanaina, part of the Athabaskan group, were the only humans residing in the Willow area until the 19th Century. Game and fish were plentiful and so they were able to maintain semi-permanent villages with populations of fifty to two hundred inhabitants each. Several related families lived in a semi-subterranean house with bark or skin roofs. The village had four or more of these structures in addition to a ceremonial or "dance" house where the villagers entertained guests, played games, and held potlatches. In the winter hunters killed caribou, moose, bear, and other game animals with spears, and bows and arrows, with bone or stone points. Dogs were used to track the game and as pack animals. During the summer they moved to "fish camp" along the shores of streams and lakes to fish for salmon. Some of them made trips to the inlet for fish and clams. In late summer the women gathered berries and wild plants, some of which were stored for winter use.

It is probable that contact with the first white man was made in the late 18th century. The exploration of the Susitna River Basin in 1794 by Captain George Vancouver was likely to have been noticed by the natives of the Willow area. It is possible that the natives traded some of their furs to the Russian posts of Cook Inlet in return for hunting and trapping supplies.

During the 1890's after the sale of Russian America to the United States several parties of American explorers reached into the Willow area. Then in 1897 gold was discovered on Willow Creek near Grubstake Gulch by M.J. Morris and L Herndon. Gold claims in the Willow Creek Mining District had increased to four by the spring of 1898.

Mining activity continued to expand despite poor transportation routes. Supplies and equipment were brought in by boat to Knik where they were packed to the mines across swamps, meandering streams, lakes, and sloughs. The summer trail went up Cottonwood Creek, and across Bald Mountain to Willow Creek for a distance of 26 miles. The winter sled trail went north crossing the present line of the Alaska Railroad at Houston, and up the west end of Bald Mountain for a distance of 30 miles. This trail, dubbed the "Double Ender Sled Trail" so named because of the double-ended sleds used which were rounded at both ends so that they could be pulled out of the snow easily if they got stuck in the snow, is still in existence and used by hunters, back-packers, and snowmobilers today. The trail continued east along Willow Creek. It is now called Hatcher Pass Road.

The Talkeetna Trail passed through Willow and was used by dog teams and pack horses. Cabins to accommodate the freighters and mail carriers were located at Nancy Lake, Willow, and other points north. This route was a forerunner of the Parks Highway.

The Willow Area gained even more permanency when it was announced that the "Susitna Route" had been selected for the construction of a government owned railroad to run from Seward to Fairbanks. Surveyors and construction crews joined the trappers and miners in the Matanuska Valley, while homesteading and other settlements increased. The entire line was completed in 1923. Warren G. Harding, the first president to visit

Alaska, drove the golden spike at the Tanana River at Nenana to signal the official completion.

The construction of the Alaska Railroad increased gold and coal mining activity. Gold mining methods changed from placer claims to hydraulic mining. The first gold quartz claim on Willow Creek was opened by Robert Hatcher in 1906. During the period from 1906 to 1934 at least twelve gold quartz mines were in operation on Willow Creek: Mabel, Fern, Snowbird, Kelly, Martin, War Baby, Gold Chord, Gold Bullion, Black, Free Gold, Independence, and Lucky Shot. Mining equipment and supplies were unloaded at Willow Station where a siding and warehouse were constructed.

By 1934 the price of gold had risen to \$34 per ounce, but mining was no longer profitable due to the increasing cost of production. When World War II began the few mines still in operation closed down because of the greater demand for coal and agricultural products. By 1954 the district was credited with total lode gold productions approaching 18 million dollars and earned the title of Alaska's largest gold quartz mining district.

Very few homesteaded in the Willow area. The cost of carving a home out of the wilderness was a slow and laborious process and many early settlers built cabins without a thought to legal claims. This accounts for many of the deserted dwellings one finds when back-packing through the state. Statistics available in 1966 claim that only 33% of those who applied were able to fulfill requirements and get title to the land.

During World War II Willow was chosen as a strategic location in which to build an air field. A Radar Warning Station was established on the hill above present Willow Hardware. A mess hall and other facilities for Alaska Communication System employees were constructed near the railroad station.

Some early settlers started mink farms, but the drone of the planes excited the mothers and they killed their young. This and the passage of a Federal Law prohibiting the use of fish for feeding mink hastened the closing of mink ranching in the Willow area.

The Trail's End Lodge opened in 1947 was Willow's first real business venture. The roadhouse served beer, wine, and sandwiches, as well as providing overnight lodging in "tent houses". This business was closed in 1948 and the building became Willow's first U.S. Post Office.

In 1959, when Mom and Pop Giordano arrived in Willow with their nine children, there was a definite need for a school. Mom Giordano told some current Willow school children that "when I arrived, the population doubled." The first school opened on October 5, 1959 and a PTA was organized a few days later. Thirty-four children were enrolled in grades 1 through 12. With so many children and only one teacher the high school children were discharged. There was no school for the high schools students during the 1959-1960 school year except by correspondence courses.

Forrest Richey provided the first school bus service to Willow School. He also provided water for the people who lived on Hatcher Pass as long as Deception Creek remained unfrozen. Before he picked up the students each morning, Forrest dropped off filled water cans for people who lived near his Hatcher Pass bus route. Then he picked up the students and took them to school. In the afternoons, he dropped the students off at their bus stops. Next, he picked up empty water cans as he came back down Hatcher

Pass Road. When he got to Deception Creek, he filled the empty water cans so that he could drop them off in the morning before he picked up the first student.

On February 13, 1960, 49 Willow area residents met in the Alaska Railroad Depot. After an open discussion it was unanimously decided to form a community organization. Thus WACO (Willow Area Civic Organization) was born. The objectives were to work for the betterment of the community and promote an active interest in residents of the area in projects which would have an effect on their welfare. Boundaries were set as the Little Susitna on the south, the Big Susitna on the west, halfway to Talkeetna on the north, and the top of Hatcher Pass on the east. The first Community Building was built in 1961 which also marked the first year of the Willow Winter Carnival.

In August 1974 the voters of Alaska approved an act to relocate the capital of Alaska from Juneau to a location west of meridian 141, known as western Alaska. On November 2, 1976 the voters of Alaska chose the Willow site to be the new capital of Alaska. Although the site was approved the funds were not and today Willow remains an unincorporated settlement with no elected officials. WACO performs some of the functions normally assumed by a city.

Willowites, as we like to be called, remain energetic and determined. They can also be described as enthusiastic, temperamental, opinionated, and definitely rugged individualists. Their most valuable assets, however, are an interest in making their community a better place, involvement in political, economic, and social activities, and a togetherness, when necessary, in spite of individual differences “Willow is my home.”

REFERENCES

White, R. M., Fulmer, M. & Kamrass, W., (1976). The Story of the Willow Area and How it Grew. Anchorage, AK: Ken Wray's Print Shop, Inc.

PHONE NUMBERS OF INTEREST

EMERGENCY		LOCATION	
Police, Fire, or Medical	911		
Willow Fire Department	Non-emergency 495-6728		Volunteer Fire department
Alaska State Troopers	Non-emergency 733-2256		
Suicide hotline, Child abuse, Domestic violence, Rape crisis	For all: 376-2411	Local contact phone number	
Poison Center	1-800-222-1222		
SENIORS			
Senior Ombudsman	1-800-730-6393		
Medicare, Medigap Hotline	1-800-478-6065		
MEDICAL			
Mat-Su Regional Medical Center	1-907-861-6000	Wasilla	
Sunshine Clinic	495-4100	MP 67	
Heart of Willow Medical Clinic	495-4362	MP 69	Dr. Anzilotti
Family Nurse Practitioner	495-8804	MP 61.5 Parks Hwy	Dixie Light ANP, FNP, PHD
UTILITIES			
Power Outage	746-7697		
Matanuska Electric	761-9300		
Matanuska Telephone	745-3211		
“Call before you dig” call center	1-800-478-3121		
Telephone repair	611		
Directory Assistance	411		
GOVERNMENT			
Road Maintenance	Hot line # 745-9826 For quickest response		Mike Lachelt Road Superintendent 745-9823 355-9823
Willow Library	495-7323 http://www.matsulibraries.org	Located in the Community Center MP 70	M,T,TH 12-8PM W,F,SAT 10-3:30PM
U.S. Post Office	495-6266	MP 69 Behind the	

		Heart of Willow building	
Transfer Site (Dump) Willow	495-5826	MP 71.5 3/4 mile up Willow Fish Hook Rd from Parks Hwy. turn right on Willow Station Rd.	10AM - 6 PM Friday-Tuesday
Mat-Su Borough Offices	745-4801	Palmer	
Animal Care/Regulations	746-5500	Palmer	
Parks & Rec.	745-9690		
DMV	Trapper Creek 733-3513	DMV	Palmer 745-2185
Representative Mark Neuman	Wasilla 376-2679	Juneau 1-800-505-2678	Precinct 15
Senator Charlie Huggins	Wasilla 376-4866	Juneau 1-800-862-3878	Precinct 15
Assembly representative Tom Kluberton	733-1457		Matanuska Susitna Borough District 7
WEATHER	& AVIATION		
Highway & Weather Conditions	511		
Alaska Weather	1-800-472-0391		
FAA Talkeetna Flight Services Station	733-2277		
FAA Kenai Flight Services Station	1-800-992-7433		
National Weather Service – Aviation Branch, Anchorage	1-907-266-5110		
SCHOOLS			
Willow Elementary School	495-6236	MP 69.3	
Houston High	892-9400	12501 W. Hawk Lane	
Susitna Valley High school	733-2241	42748 S. Parks Hwy MP 99	
OTHER			
Food Bank	495-6638 Open Wednesdays 10-2PM	Willow United Methodist Church MP 67.5	Fran Lynch

VOTING

Willow is Voting Precinct 15-135. Voting location is the Willow Community Center at MP 70 on the Parks Highway.

CHURCHES

CHURCH	PHONE #	LOCATION	
Church of Jesus Christ of Latter Day Saints	495-5089	Downing Street Parks Hwy MP 67.5	
First Baptist Church of Willow	495-6852	Long Lake Road Parks Hwy MP 69	
Kashwitna Community Church	495-7201	MP 75 Parks Hwy	
Willow United Methodist	495-6638	MP 67.5 Parks Hwy	
St. Christopher's Catholic Church	495-4500	MP 67 Parks Hwy	
New Life Christian Center	495-6482	MP 69.5 Parks Hwy	
Willow Bible Fellowship	495-2404	Heart of Willow building MP 69	Gerald Keene Sunday School 9:45 and services at 11:00AM & 6PM
North Star Bible Camp	495-6378 nsbc.com	PO Box 4 12 miles up Willow Fishhook Rd. on right	Mark & Karen Miller 495-6378 Weekend & group rentals, conference center, youth summer camp

LOCAL ORGANIZATIONS

WACO (Willow Area Community Organization, Inc.)	Meets 1 st Monday of month at 7Pm at the Community Center	Linda Oxley president 495-6633
WACO - Trails Committee	Meets 3 rd Wednesday of the month 7PM at the Community Center	Steve Charles chair 495-6368 trails@waco-ak.org
WACO - Carnival Committee	Meets 3 rd Monday of the month 7PM at the Community Center	Pat Madigan chair 495-5737
WACO - CERT	No set meetings	Mark Allen 495-1210
Community Enrichment Program	Borough program, no meetings	Pat Madigan 495-5737
Willow Comprehensive Planning Committee	Meets 1 st Thursday of the month at 6:30PM at the Community Center	Dean Davidson chair 495-1112
Chamber of Commerce	Meets 1 st Wednesday of the month 7 PM at various locations	Jim Huston chair 495-6800 Mail@willowchamber.org P.O. Box 183, Willow, Alaska, 99688
Emergency Services	Meets every Tuesday 7PM at the Fire house MP 70	Darral Godbee representative to WACO 495-6505
Garden Club	Meets 3 rd Thursday of the month 7PM at the Community Center	Dorothea Taylor president 495-1005
Lions	Meets 2 nd and 4 th Thursday of the month 7PM at the Community Center	Tom Phillips 495-8010
PTA	Meets 2 nd Tuesday of the month, alternating 3PM one month and in the evening the next month in Willow Elementary school library	Sam Newman President 495-6050 Cell: (907) 355-4003
Road Service	Meets March, June, September and December the 4 th Thursday at Willow Haven Senior Commons Room 7PM	Jim Norcross 495-6650 or Cell 907-440-0781
Willow Area Seniors, Inc.	Meet 3 rd Wednesday of the month at 6:30PM in the Willow Haven Commons Room MP 70	Gail Just president 495-4056

She-Mon-Sun	Meets 1 st & 3 rd Thursday a10:30 at the Willow Haven Commons Room MP 70	Kathy Huston 495-6800 Sewing & Home making Educational scholarships
WDMA (Willow Dog Mushers Association)	Meets 4 th Wednesday of the month 7PM at the Community Center	Erin McLarnon president 495-0671 erin-pcorp@alaska.com)
Willow Health Organization 501c3 – nonprofit	Meets 2 nd Tuesday of the month 7PM at the Community Center	Nina Davidson chair 495-1112 willowhealth.net
4H Club		Ember Haynes 495-2315
Library	Meets 2 nd Monday of the month 10AM in the Library	Nicole Pease – Librarian 495-7323 Claire Fitzgerald – representative to WACO
Girl Scouts – Little Su Service Unit of Susitna Council	Girls from Kindergarten through High school Living from Meadow Lakes to Trapper Creek	Ola Williams - Service Unit Manager 495-4024 Julie Alexander – Membership Services Director 376-3822
Willow Historical & Wildlife Society	Meetings as needed	Jim Huston 495-6800

LOCAL ACTIVITIES

Run through the Community Enrichment Program
See the WACO website at <http://www.waco-ak.org>

Tae Kwon Do
Willow Walkers
Exercise Group
Willow Tots – play group
Bridge – card players

OTHER ACTIVITIES

Library preschool story time (495-7323)
Iditaquilters – quilting group
(Call Nina at 495-1112)

FARMERS MARKET

Farmers Market is a project of the Willow Health Organization.
Locally grown or made items will be for sale every FRIDAY starting JULY 3 through
SEPTEMBER from 3-7 PM location to be determined.
The Farmers Market is a member of the Alaska Farmers Market Association.
Contact Dean Davidson for more information at 495-1112.

NANCY LAKE STATE RECREATION AREA

The parks entrance is 6 ½ miles southwest down Nancy Lake Parkway from MP 67.3 on the Parks Highway.

Nancy Lake Parkway is only plowed to the winter trail head in the winter. Nearly 40 miles of trail are maintained throughout the park area, including 10 miles of trail only for skiers. With the exception of the ski trail, all trails are multi-use trails, which means that they must be shared by snowmachiners, dog mushers, skiers and snowshoers.

Ice fishing is another recreational activity offered at Nancy Lake. Most lakes in the area have limited fisheries, but Nancy Lake, Lynx Lake and Red Shirt Lake offer fair to good fishing for rainbow trout. Red Shirt Lake and Lynx Lake have good fishing for pike. Big and Little Noluck lakes are stocked with rainbow trout by the Alaska Department of Fish and Game. These two lakes usually offer good ice fishing for trout up to 14 inches.

IMPORTANT PARK REGULATIONS

1. No Littering
2. No Discharge of firearms
3. Use of Motorized Snow Vehicles is permitted throughout the recreation area, except for the closed area north of the Parkway, when there is sufficient snow cover to protect vegetation. Snowmachine registration is required to operate on public land.
4. All park areas are closed to cutting of live trees. To protect ground cover, open fires are permitted only in fireplaces provided.
5. Your cooperation in reporting vandals and violators of park regulations is appreciated.

PUBLIC USE CABINS

The Division of Parks and Outdoor Recreation rents twelve cabins in the Nancy Lake State Recreation Area on a daily basis. These cabins are insulated and equipped with bunks and a stove. The cabins are on Nancy Lake, Red Shirt Lake, Lynx Lake and James Lake. Use of these cabins is by reservation only. For more information and to make reservations, call the Mat-Su area office at 745-3975 or The Department of Natural Resources Public Information Center at 762-2261.

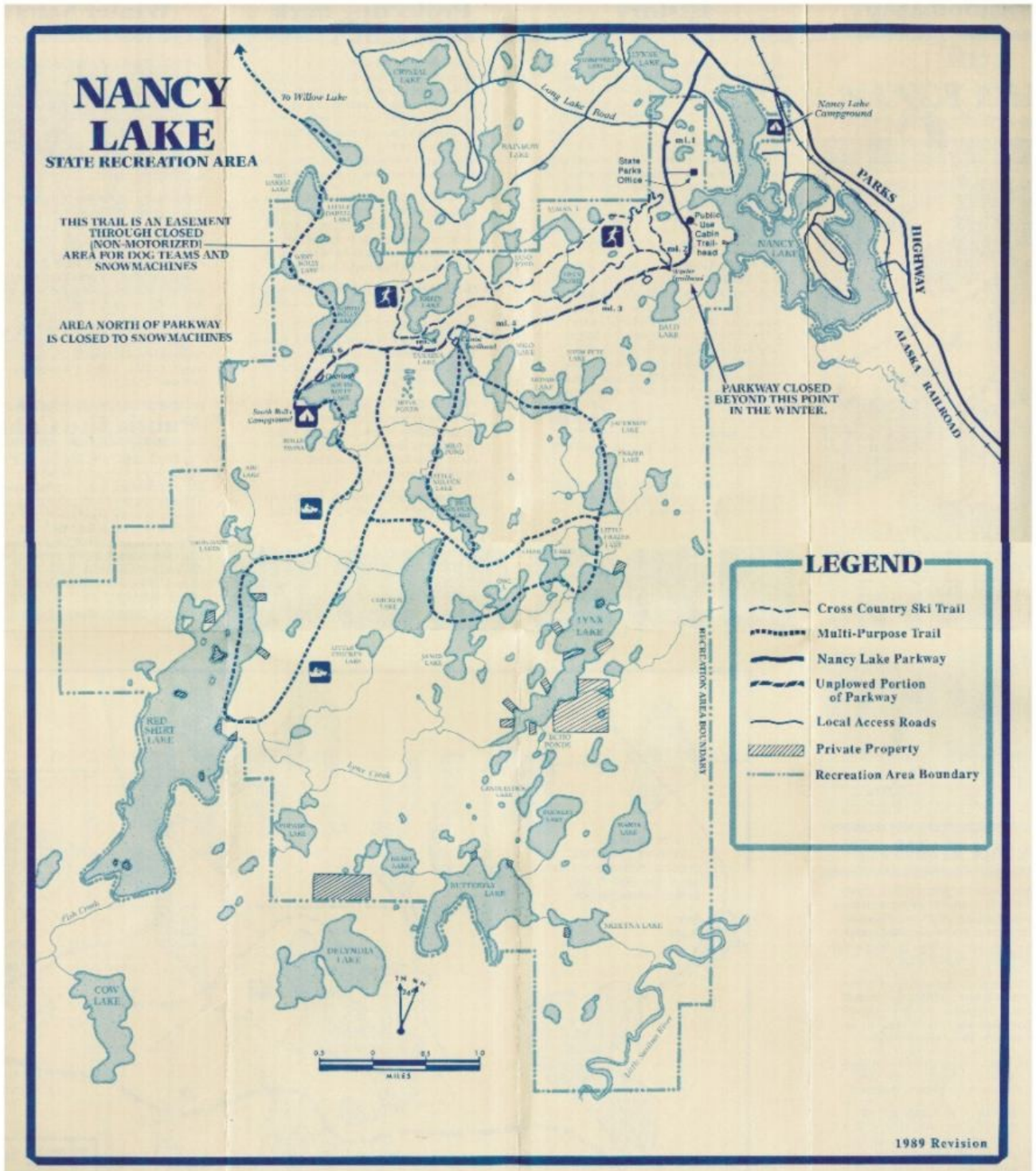
FOR MORE INFORMATION

Park Rangers at Nancy Lake: 495-6273 or FAX 495-6671

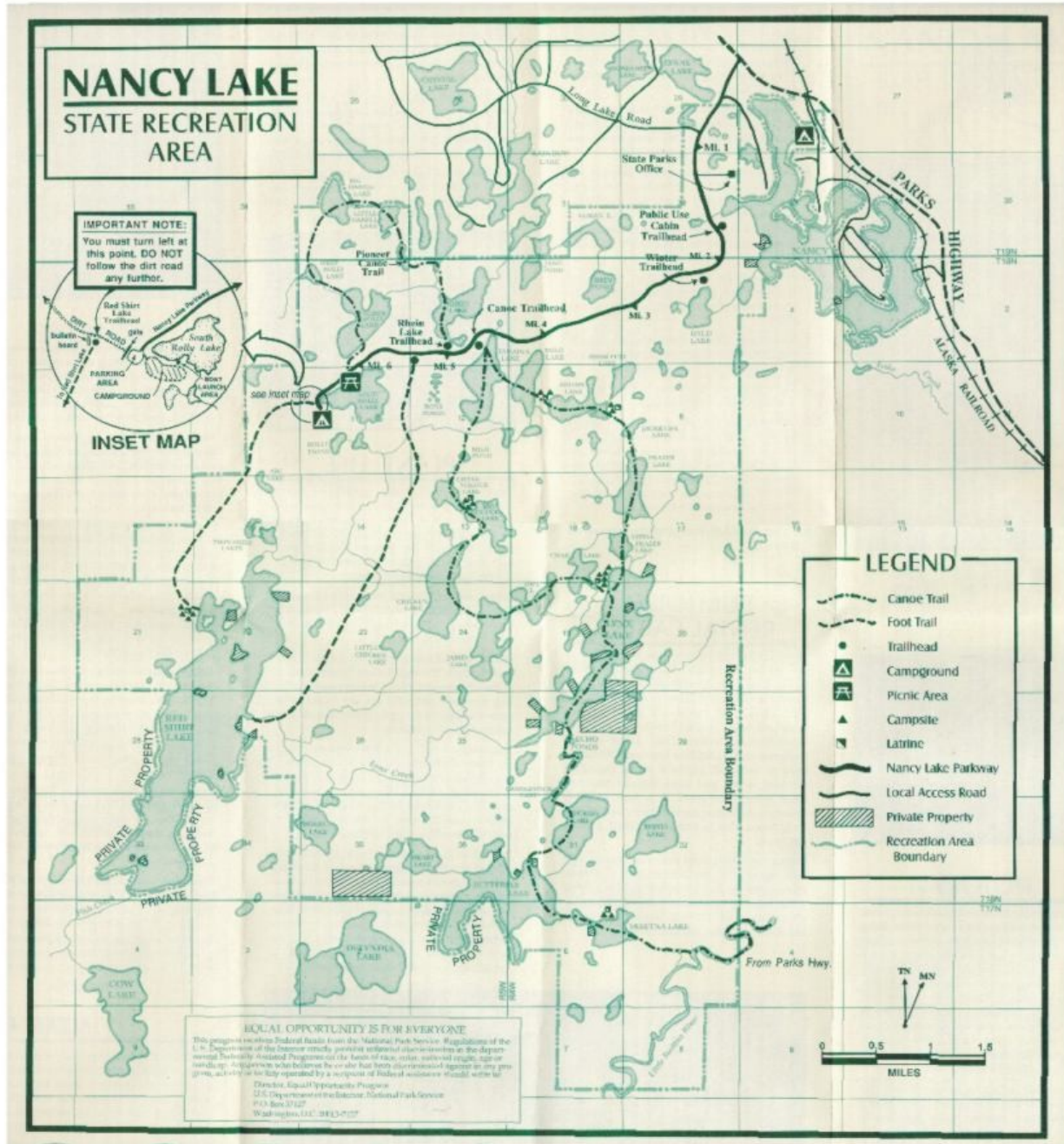
HAESSLER-NORRIS AND EMIL STANCEC TRAIL SYSTEMS

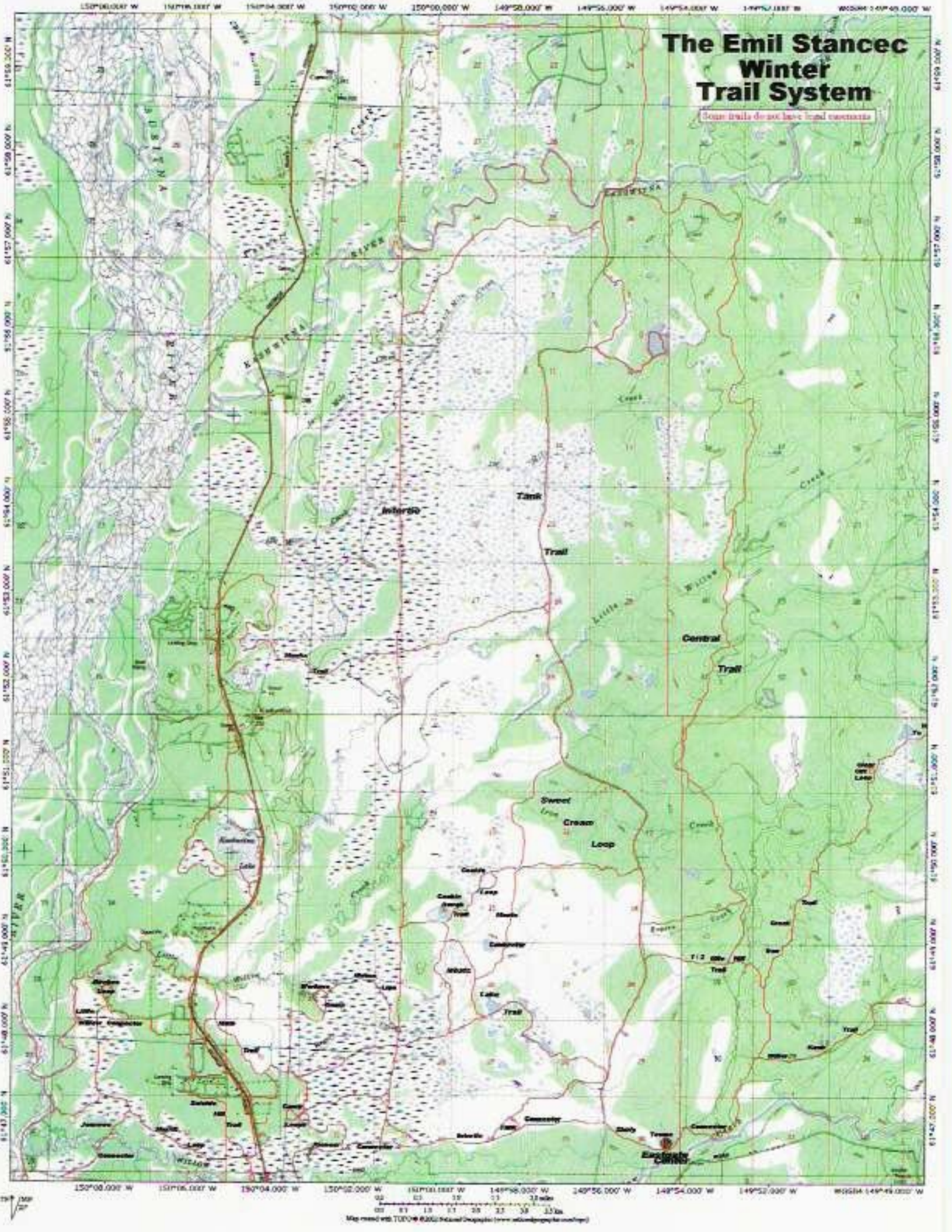
Two of Willow's Trail Systems-the Haessler-Norris and Emil Stancec LACK approved status by the Borough and the State. They are now groomed at a considerable cost and time by local dog mushers. They appreciate your courtesy when using them.

NANCY LAKE STATE RECREATION TRAIL MAP (Winter)



NANCY LAKE TRAIL MAP (SUMMER)







WILLOW AIRPORT and FLOAT PLANE BASE

Willow Float Plane Base located on Willow Lake. Willow Airport (UUO/PAUO) located directly across the Parks Highway from Willow Lake. State operated, year round with lighted 4000ft gravel strip. Uncontrolled, CTAF on 122.8. AVGAS available 24 hrs.

BUSINESSES

Name	Contact information	Location	Description
Alaska Host Bed & Breakfast	495-6800 Cell: (907) 355-4700 akhost@alaskanhost.com akhost@mtaonline.net alaskanhost.com		Kathy & Jim Huston
Alaska Quality Builders	495-6200 akqual@mtaonline.net alaskaqualitybuilders.com	PO Box 674 Willow, AK	Rick and Karrol Johnson Homebuilding/ remodeling/ decks/much, much more
Alaska Vacation Homes	(907) 495-7368 akvacationhomes.com	Off from Long Lake Rd.	Donna Laffey Rentals
Alaska's Winter Park Cabins	495-5884 winterparkcabins@ mtaonline.net alaskaswinterparkcabins.com	PO Box 428 11931 Hagion Shore Dr. Willow, AK	Bill and Natalie Luth Lake front rental cabins
Alaskan Bobcat Company	495-7433	Willow	landscaping
Alaskan Dream Espresso, LLC.	495-5283	MP 71.5 Parks Hwy at junction with Willow Fishhook Rd	Ola & Paul Williams Drinks & Food
Albino Hare	495-6716	Mile 6.3 up Willow Fishhook Rd. from Parks Hwy	Sylva Art Gallery, Lotion bars, Garden tours & Parties
Birch Grove Farm	495-1018	Mile 79 Parks Hwy – Kashwitna PO Box 49 Willow, AK	Ted & Jean Berry U-dig trees & shrubs, hay, U- cut firewood, subdivision lots

Capitol Speedway Inc.	495-6420 Fax 495-5819 capitolspeedway.org	MP 75.5 Parks Hwy	Wes & Nancy Wallace Open May – September
Carpenter's Touch LLC	495-5770 Fax 495-5771 http://thecarpenterstouchllc.com rsmelton@mtaonline.net		Rick L. Melton
Century 21	495-4056 Cell: (907) 355-4063 gailjust@gmail.com	PO Box 1124 Willow, AK	Gail Just - Licensed Realtor
Clearing The Way	495-8771 Cell 715-8872		Jeff Fuller Plowing
Cross Gallery	495-6472 pacross@mtaonline.net	PO Box 990 Willow, AK	Penni Anne Cross Dolls & Art
Custom Catering	775-9568	Burger Bus at MP 69 Parks Hwy	Debbie Dancer Drive-through Restaurant & Espresso
Denali Flying Service	495-5899 dfs@mtaonline.net	Willow Airport PO Box 1017 Willow, AK	Barry & Kirsten Stanley
Deshka Candle Works	495-8808 Willow-What.com Willowwhat@mtaonline.net		Tony Richter
Deshka Landing Outdoor Association LLC	495-3374 deshkalanding@deshkalanding.com	PO Box 155 Willow, AK	
Dream a Dream Dog Farm & Dream Inn B&B	495-1197 1-866-4AK-MUSH vhalter@mtaonline.net vernhalter.com	PO Box 389 Willow, AK	Vern Halter Susan Whiton Iditarod kennels, tours & fun

Dynamic Properties	495-2333 Cell: (907) 715-7505 duane@duanemathes.net duanemathes.net matsuproperty.com Susitnashores.com	PO Box 777 Willow, AK 99688	Duane Mathes
Eagle Quest Lodge, Restaurant & Guide Service	495-1116 eaglequestalaska.com	Deshka Landing	Ray and Shirley
Eyak Aircraft	495-6428	Willow Airport	Joe Stanger Inspections, maintenance & repair
Godbee Tractor & Backhoe	495-6505 godbee@mtaonline.net	PO Box 595 30571 N Parks Highway	Darral Godbee
Griffin Water & Well Drilling	495-7297 Licensed, Bonded & Insured	PO Box 696 Willow, AK	Pam & Joe Griffin Family owned business
Hatcher Pass Polaris	495-4639 hatpass@mtaonline.net hatcherpasspolaris.com	MP 66 Parks Hwy PO Box 58 Willow, AK	Matt Marletto
Heart of Willow Center	495-7970 Melvin D. Veit 495-6408 Mary Jo Arterburn	MP 69 Parks Hwy	Commercial space available
Huston Services	Cell: (907) 355-4700 akhost@mtaonline.net		Jim & Kathy Huston Gravel sales & loader services
Lakeside Gardens & Gallery	Cell: (907) 244-7774 karenmattson.com	PO Box 233 Willow, AK	Karen Mattson Artist; Originals, Giclee's, Cards
Matanuska Valley Federal Credit Union	495-6271 mvfcu.coop	MP 69.3 Parks Hwy	Open 10-5PM M-F
Matsu Air Service, Inc.	495-3112	Willow Airport	Mark Kapsner Maintenance & Inspections
Melvin D. Veit	495-7970 melveit@mtaonline.net		CPA

Merrill's Maintenance & Repair	495-1168 Cell: (907) 232-1168 markmerrill1@hotmail.com	PO Box 103 Willow, AK	Mark Merrill Homes or any construction repair or maintenance
MKG Storage	495-6090	MP 64.5 Parks Hwy Nancy Lake	Storage
Newman's Hilltop Service	495-6479	MP 68.8 Parks Hwy PO Box 98 Willow, AK	Gene Newman Gas station, excavation, septic systems, driveways, towing
Noah's Ark Bed & Breakfast	495-8994 Cell: (907) 982-0592 noahsark@ mtaonline.net noahsarkbandb.net	PO Box 865 10818 Credo Drive Willow, AK	Patricia Eckhoff & Sarah Richardson
Pilch land surveying	495-6611 phpilch@mtaonline.net	Willow area	Paul Pilch
Plowing	841-1876	Willow	Ted Burns
Quilted Loon/BBC Quilts	495-1200	PO Box 661 Willow, AK 14347 N. Lakeshore	Bobbie Lewis Custom Kuspuks & Quilting Patterns
Roni's Chinook Deli & Pizza	495-5560	MP 69 Parks Hwy Heart of Willow Bldg PO Box 494 Willow, AK	Roni Widner
Scattered Hairs	495-6090	MP 64.5 Parks Hwy	Stephanie Ruggieri- Wilkins
Schwager Haus Bed & Breakfast	495-1283 alaskalife@ schwagerhaus.com schwagerhaus.com	PO Box 522 Willow, AK	Herb, Tina and Jennifer Schwager
Simply Spoiled Nails	315-3310	MP 64.5 Parks Hwy	Karen Miller
Sky Construction	355-4944 andyandrachael2008@ya hoo.com		Andy West No job too big or small

Small Biz Resource	495-7771 hermann@ resource4profit.com	PO Box 948 Willow, AK 99688	Hermann A. Spegal consulting
Smyth Logworks	841-3914 rameysmyth@hotmail. com	MP 67.2 Parks Hwy	Ramey Smyth Logwork – any style & woodwork
Speedway Inn & Motel	495-6420 Fax 495-5819 capitolspeedway.org	MP 75.5 Parks Hwy	Wes & Nancy Wallace Open in the summer only
Speedway Inn Restaurant	495-6420 Fax 495-5819 capitolspeedway.org	MP 75.5 Parks Hwy	Wes & Nancy Wallace Open in the summer only
Susitna Music	495-6368 scharles@mtaonline.net		Steve Charles Certified Music Teacher & piano tuner
Susitna Valley River Guides	495-2699 info@susitnavalley.com susitnavalley.com	Willow Station Rd. Box 889 Willow, AK	Michael and Sonya Coughlin Fishing, sight seeing, furs
TLC	495-1218	MP 73.6 Parks Hwy	Susie Carlson Beauty salon Mens & womens hair
Townsite Food Mart, Inc.	495-4545	MP 69.5 Parks Hwy	Grocery, deli, gas, diesel
Townsite Video & Liquor	495-5844	MP 69.5 Parks Hwy	Video rental & liquor
Trapline Realty	495-5263 bob@traplinerealty.com	MP 65.2 Parks Hwy	Bob McCain Realtor
Trimmer Aviation	495-5724 Trimmeraviation.com	Willow Airport 32691 W. Parks Hwy	Eddie Trimmer General aviation maintenance, service & repair
Valley Bearing	495-6205	MP 64.5 Parks Hwy	Ron Wilkins Power transmission products
Valley Fuel	495-7050	MP 68.8 Parks Hwy	Gene Newman Fuel oil

Valley Roofing	495-3193	Caswell	Vincent & Melissa Burke Log weaving & foundations
Watercolors Unlimited	495-7368		Donna Laffey paintings
Willow Air Service	495-6370 or 495-6789 Cell: 232-2144 willowair@gci.net willowair.com	PO Box 42 Willow MP 70 32250 W Parks Hwy.	Gwen White Fishing, hunting & flight seeing
Willow Area Seniors Inc. Willow Parkway	495-5222	Willow Parkway	BJ Eldred Housing Director
Willow Area Seniors, Inc. Willow Haven	495-5222 willowsenior@mtaonline.net	MP 70 Parks Hwy 32186 W Parks Hwy. Mail: HC 89 - Box 57 Willow AK	BJ Eldred Housing Director
Willow Creek Grocery	495-6275 comet62@gci.net	PO Box 9 Willow, AK	Debra and Doyle Holmes
Willow Creek Resort	495-6343	Mile 71.5 Parks Hwy.	RV park, guided fishing, cabin rentals
Willow Creek Service	495-6275 comet62@gci.net	PO Box 9 Willow, AK	Debra and Doyle Holmes
Willow Creek True Value Hardware	495-6275 comet62@gci.net	PO Box 9 Willow, AK	Debra and Doyle Holmes
Willow Self-Storage	495-7867	MP 69, ¼ mile Long Lake Rd	Storage
Willow Therapeutic Massage	495-8880	MP 69.5 Parks Hwy Heart of Willow building	Mary Sagal, LMT, MS, MFA, BS
Willow Trading Post	495-1695	Willow Station Rd.	Restaurant & Bar, RV park, Cabins, Showers & Laundry

WILLOW WINTER CARNIVAL

Willow Winter Carnival began in 1961 as a fun way to raise funds for the Willow Area Civic Organization, who had recently built a log community building. Many community members and businesses helped to organize, fund and put on the event. Events such as the Hatcher Pass '60' snowmobile race, the Willow Enduro Ice Race which was a sports car race and motorcycle racing on ice have come and gone. Other events such as the Earl Norris sled dog race, the Swede saw and X-cut competition, the cribbage tournament and X-Country ski race have endured.

Today the Carnival continues to be the major yearly fund raiser for WACO. It draws hundreds of people to enjoy the many events offered during two full weekends at the end of January and beginning of February in beautiful scenic Willow. Most events are held at the Willow Community Center MP 70 on the Parks Hwy.

Carnival Awards

Carnival King & Queen

The Rosalie White Memorial given for outstanding community service

The Betty Douglas Memorial given for outstanding community service through a service organization

The Mike Ardaw Memorial given for outstanding service as a good neighbor

The Willow Youth Award given to a young person under age 18 who has shown outstanding contributions to the Willow Community

2009 Schedule of Events

Both Weekends

Pancake Breakfast at school

Carnival Kitchen Open

Trade Fair

Friday January 30

Don Bowers Memorial Sled Dog Race
Start

Quick Draw Art Contest & Auction

Saturday January 31

Kids Indoor/Outdoor Events

Blood Bank

Skijor Race

3m X-Country Ski Race

Out House Challenge

Earl Norris Open Sled Dog Challenge

Ice Cream Eating Contest

Chili Taste Off

Bingo \$1000 purse

Sunday February 1

Kids Sled Dog Races – 1, 2, 3 dog
classes

Best Alaskan Beard Contest

Earl Norris Open Sled Dog Challenge

Cribbage Tournament

Co-ed Team X-Cut Saw

Ladies & Mens Swede Saw

Friday February 6

Carnival Ball "1959 Sock Hop"

Saturday February 7

Art & Crafts Exhibit (at the school)

Kids Indoor/Outdoor Events

Dog Weight Pull In

Snowmobile Radar Run

Vintage/Classic Snowmobile Show
& Closed Course Event

Dog Weight Pull

Fun Ski Race

Ice Cream Eating Contest

Frostbite 5K Running Contest
Chain Saw Contest
Talent or Not Contest

Chess Tournament
Lead Dog Contest
Telephone Toss
Paul Bunyan Wood Cutting Contest
Stampede Race
Pie & Dessert Auction
Mini Raffle Drawing
Carnival Raffle Drawing

Sunday February 8

Arts & Crafts Exhibit (at the school)
Sven Erikson Ski Race
VMBaH Varnoose 25 Bike Race
Iron Guide Dog Challenge
Family GPS Snowmobile Run

IDITAROD RESTART

The Iditarod restart takes place at the Willow Community Center at MP 70 on the Parks Highway. Next year, 2010 it will be held on **Sunday March 7th starting at 2 PM.**

The Iditarod is a 1,150 mile race across Alaska starting in Anchorage and ending in Nome by dog sled. Mushers generally take between 10 to 17 days to complete the race. They encounter many varying types of terrain including rivers, forests, marshes, mountains and coastal areas. Dorothy G. Page the "Mother of the Iditarod" joined with Joe Redington, Sr. to organize the first Iditarod in 1973 with 22 mushers finishing the race that year. It was started following the original mail and supply routes. In 1925 when Nome developed an outbreak of Diphtheria part of the Iditarod trail was used to rush serum to Nome by dog sled. The race has continued to grow since then into a nationally televised event with thousands of spectators.

A separate parking lot adjacent to the Willow airport is available with shuttle service to the Willow Community Center. It is advisable to come early because the parking lot does fill up. Shuttle service is also available from surrounding communities. Many people gather on local lakes to cheer the teams on as they pass by. Bonfires can be found both locally and on various other points on down the trail to celebrate the annual running of the Iditarod. A variety of vendors can be found both inside and outside of the community center.

For more information visit www.iditarod.com

Jennifer Ambrose (Restart coordinator) restart@iditarod.com

Sara Lamont (Dog handling coordinator in Willow) lamontsara@gmail.com

Bernadette E. Anne (Communications coordinator) Bernadette@iditarod.com

JUNIOR IDITAROD

The Junior Iditarod was first started in 1975 by a group of young mushers. It continues to give valuable racing experience to those interested in long distance mushing. The race **starts** 10 AM Saturday **Feb 27, 2010** at Knik Lake which is located at Mile 13 on Knik Goose Bay Road in Wasilla. The race finishes 6 PM Sunday Feb 28 at the Willow Community Center located at MP 71 of the Parks Highway. It is an approximately 180 mile race for mushers ages 14 to 17 years old.

For more information visit www.jriditarod.com

ANNUAL COMMUNITY EVENTS

January/February Willow Winter Carnival – Two full weekends of events
 July 4th Parade and Picnic
 September WDMA Sled Dog Symposium – September 18-20, 2009
 October Oktoberfest Raffle and Dinner – 3rd Saturday
 November Holiday Bizarre – 3rd Saturday

WEATHER in WILLOW

1971 until present

	JAN	FEB	MAR	APR	MAY	JUN	JUL	AUG	SEP	OCT	NOV	DEC	ANNUAL
Mean Temp.	4.6	10.5	20.6	33.9	46.1	55.2	59	55.7	46.1	29.4	13.0	7.0	31.8
Mean High Temp.	14.9	23.3	35.0	46.6	59.0	66.9	69.3	66.0	56.0	38.1	22.1	16.0	42.8
Mean Low Temp.	-5.7	-2.3	6.2	21.2	33.2	43.5	48.7	45.4	36.2	20.6	3.8	-2.1	20.7
Mean Precip. inches	1.08	0.88	0.81	0.92	1.04	1.51	2.14	3.12	3.54	3.12	1.59	1.91	21.66
Mean snow fall inches	10.4	10.4	8.2	3.1	0	0	0	0	0.3	8.5	12.7	18.6	72.2
Highest Daily Maximum	47	49	54	69	83	88	89	86	76	62	54	49	89
Lowest Daily Maximum	1982	1979	1972	1985	1985	1985	1980	1980	1992	1996	1990	1080	1980
Highest Daily Minimum	-50	-48	-36	-21	16	28	31	22	5	-20	-40	-42	-5
Lowest Daily Minimum	1989	1999	1992	1985	1992	1985	1971	1974	1992	1982	1990	1990	1989

Information taken from the Alaska Climate Research Center website
<http://climate.gi.alaska.edu/Climate/Location/CookInlet/WhitesCrossing.html>
 April 2009.

FISHING

The Following Lakes were stocked with Rainbow Trout in 2008

Crystal Lake	North Rolly Lake
Florence Lake (Grayling also)	Vera Lake
Honeybee Lake	Willow Lake (Coho Salmon also)
Little Lonely Lake	
Long Lake (Arctic Char also)	Deception Creek was stocked with
Lynn Lake (Arctic Char also)	Chinook Salmon

This information was taken from

<http://www.sf.adfg.state.ak.us/Statewide/hatchery/index.cfm/FA/stocking.areaSearchResults> on May 11, 2009.

SALMON RUNS

Deshka River King Salmon Lower: Late May through late June. Upper: Early June through season close in mid-July.

Silver Salmon Lower: Mid-July through early August. Upper: Late July through early September.

Parks Highway streams: Willow Creek, Little Willow Creek, Caswell Creek, Sheep Creek, Goose Creek, Montana Creek, Kashwitna River, Sunshine Creek.

King Salmon Late May through early July.

Silver Salmon Early August through mid-September.

Susitna River streams King Salmon Early June through late June.

Red Salmon Mid-July through mid-August, but not very abundant in this area.

Silver Salmon Late July through mid-August.

Pink Salmon Early July through mid-August, greatest abundance on even-numbered years.

Chum Salmon Mid-July through mid-August, but not very abundant in this area.

Little Susitna River King Salmon Lower: Late May through late June. Upper: mid-June through season close in mid-July.

Silver Salmon Lower: Mid-July through mid-August. Upper: early August through early September.

Red Salmon Mid-July through early August.

This information was taken from

http://www.sf.adfg.state.ak.us/Static/Region2/pdfpubs/valley_runtime.pdf
May 11, 2009.



